

## Features

Color ES Touch Screen Remote Displays and Annunciators are for use with 4100ES and 4010ES Fire Alarm Control Units (FACUs) and provide the following features for customized operating convenience:

- Event activity display choices are individually selectable for each event type, and include the following items: First 8 Events, or First 7 Events with emphasis on Most Recent, or First 6 Events with emphasis on First and Most Recent.
- System reports are easily viewable and you can read logs with minimal scrolling.
- Up to two languages are available for each system, easily selected by programmable key press.
- You can vector the information sent to ES Touch Screen Remote Displays by point or zone.
- Both Hard and Soft keys are available for the following critical functions: Event Acknowledge, Alarm Silence, and Reset Functions.
- Resistive touchscreen technology allows operation with or without gloves.
- Seven programmable RGY LEDs are available for user-defined display status, with up to two status conditions for each LED.
- Seven programmable Soft keys are available for user-defined control or maintenance functions.
- You can change the PRI2 Soft key label to CO to annunciate carbon monoxide detection status.
- You can program an ES Touch Screen Display to report individual points or groups of points as a single zone.
- Seismically compliant under the State of California Statewide Office of Housing and Development (OSHDPD) Special Seismic Certification (SSC) program guidelines. Refer to *Simplex Seismic Application Guide* (579-1213) and *Battery Brackets for Seismic Activity Applications* (S2081-0019) for details.

### Display properties:

- 8 in. (203 mm) diagonal, 800 x 600 resolution color touch screen display capable of annunciating up to 8 active events without scrolling
- Bright white LED backlighting provides efficient and long lasting illumination. The backlight is dim in quiescent state and automatically switches to full power on touch or on event activity in system.

## Introduction

The Color ES Touch Screen Displays have intuitive operation similar to a tablet or smart phone that mimics the FACU user interface operation. The larger area format shows more information available at-a-glance than an individual text line display, and minimal key presses are needed to access detailed information.



Figure 1: ES Touch Screen Display in Remote Cabinet

## Description

ES Touch Screen Remote Displays for 4100ES and 4010ES fire alarm systems provide a large display with extended information content, dual language support including UTF-8 character languages, and an intuitive control key interface with the following features:

- Up to 10 ES Touch Screen Displays are supported for each 4100ES or 4010ES control panel. You can allow one ES Touch Screen Display to take-control and to designate access levels for interfaces not in-control. You can also assign programmable LEDs to in-control status indications.
- Menu-driven format conveniently prompts operators for the next action required.
- Direct point callup displays individual points alphabetically and then homes in on the logical choice as more point information is entered.
- Event categories are color coded for quick visual representation: red for Alarm and Priority 2 Events, yellow for Supervisory and Trouble events.
- Date formats are either MM/DD/YY or DD/MM/YY.
- Time formats are either 24-hour or 12-hour with AM/PM.
- System Normal screen supports a color background or watermark for company name, company logo, site plan, or other desired display content.

\* This product has been approved by the California State Fire Marshal (CSFM) pursuant to Section 13144.1 of the California Health and Safety Code. See CSFM Listing 7165-0026:0251 for allowable values and/or conditions concerning material presented in this document. Additional listings may be applicable; contact your local Simplex product supplier for the latest status.

## Display screen examples

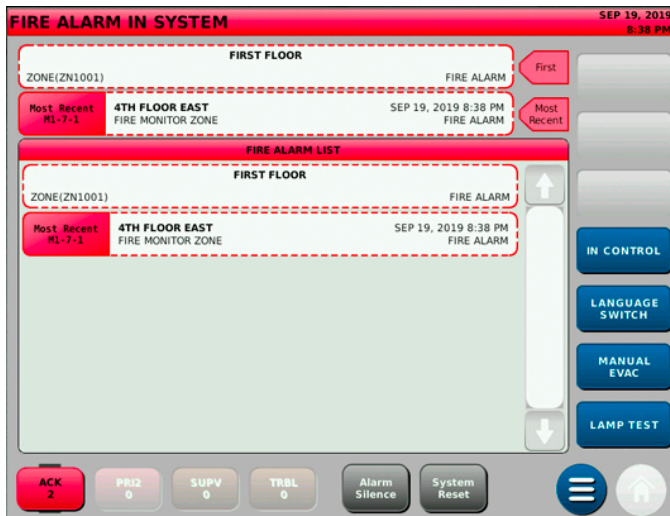


Figure 2: First and Most Recent alarm display



Figure 3: Main Menu



Figure 4: First eight active trouble events list

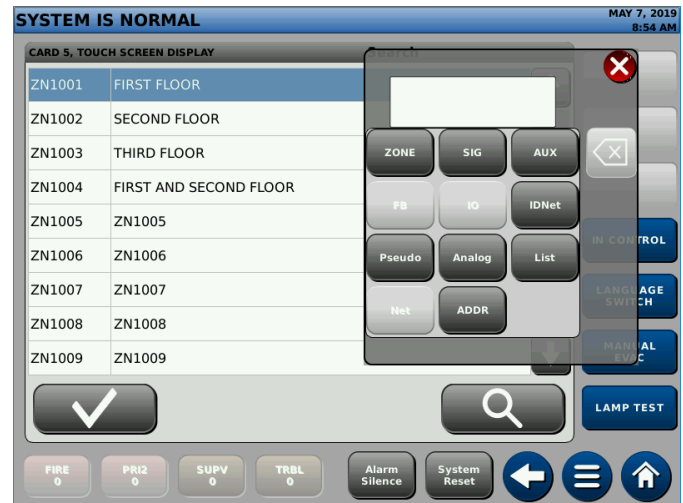


Figure 5: Direct point callup

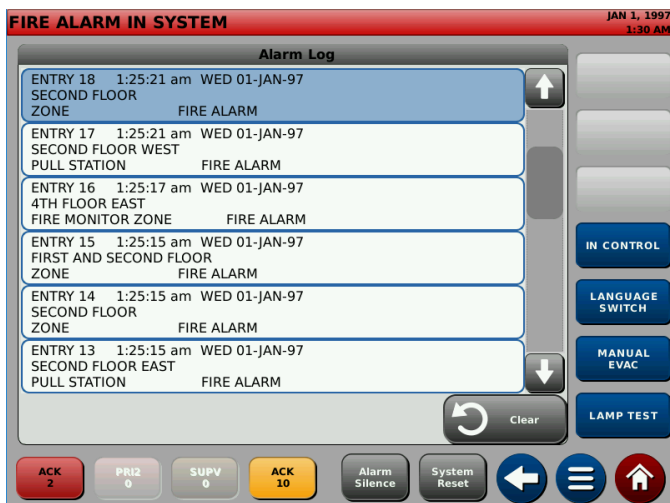


Figure 6: Alarm history log

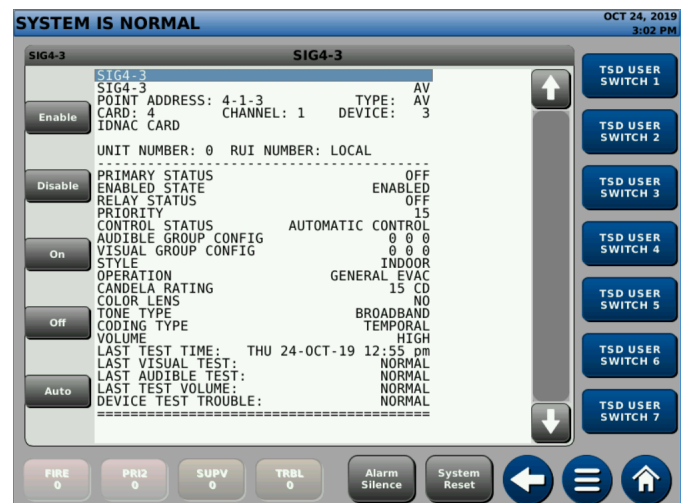


Figure 7: Detailed point status screen for TrueAlert ES appliance

## Control panel operation reference

**Note:** Refer to *ES Touch Screen Display Operator's Guide (579-1329)* for detailed operator instructions.

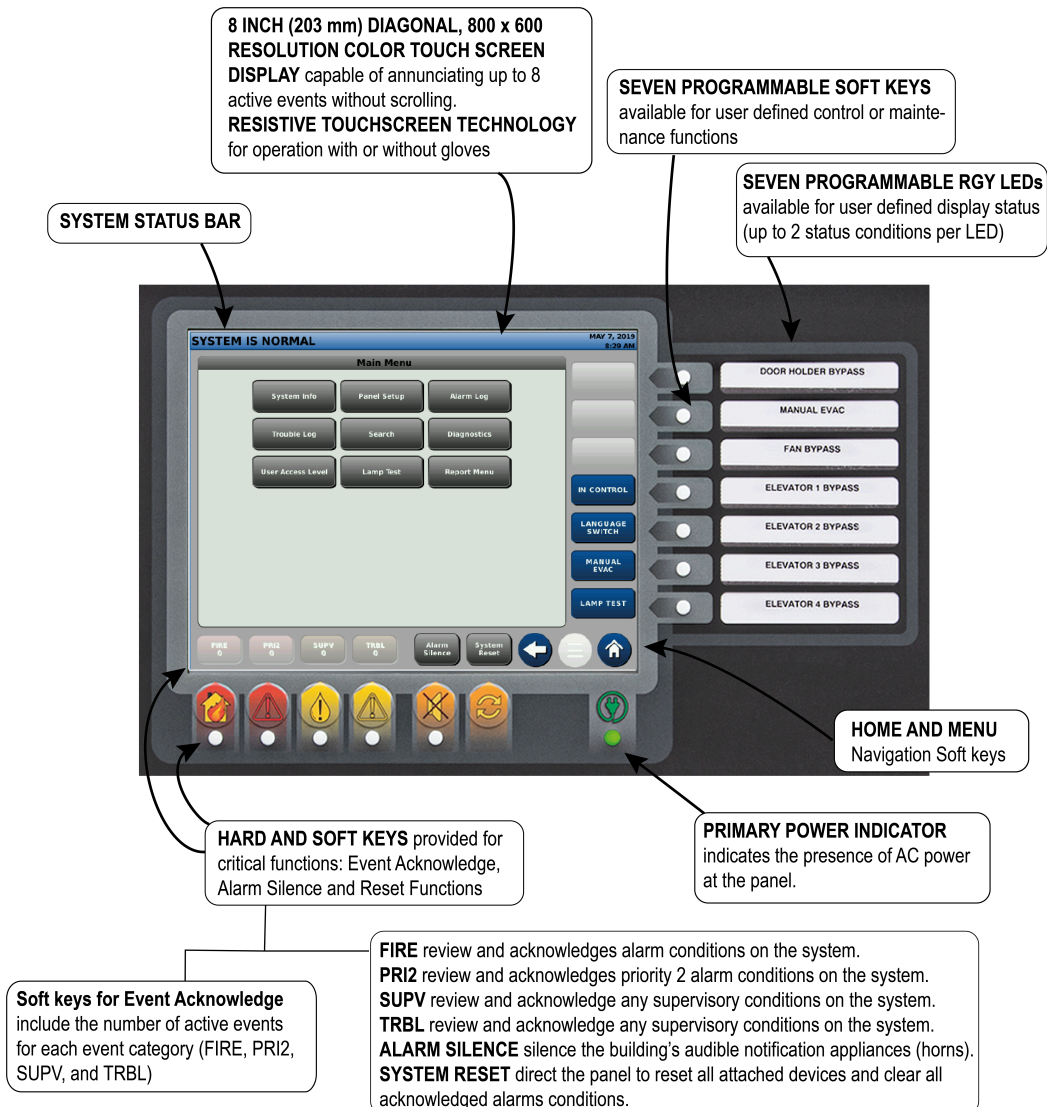


Figure 8: ES Touch Screen Display operator interface

## ES Touch Screen Display Remote Assembly front view



Figure 9: Remote ES Touch Screen Display front view

## Remote ES Touch Screen Display mounting reference for 4100-9404 and 4100-9405

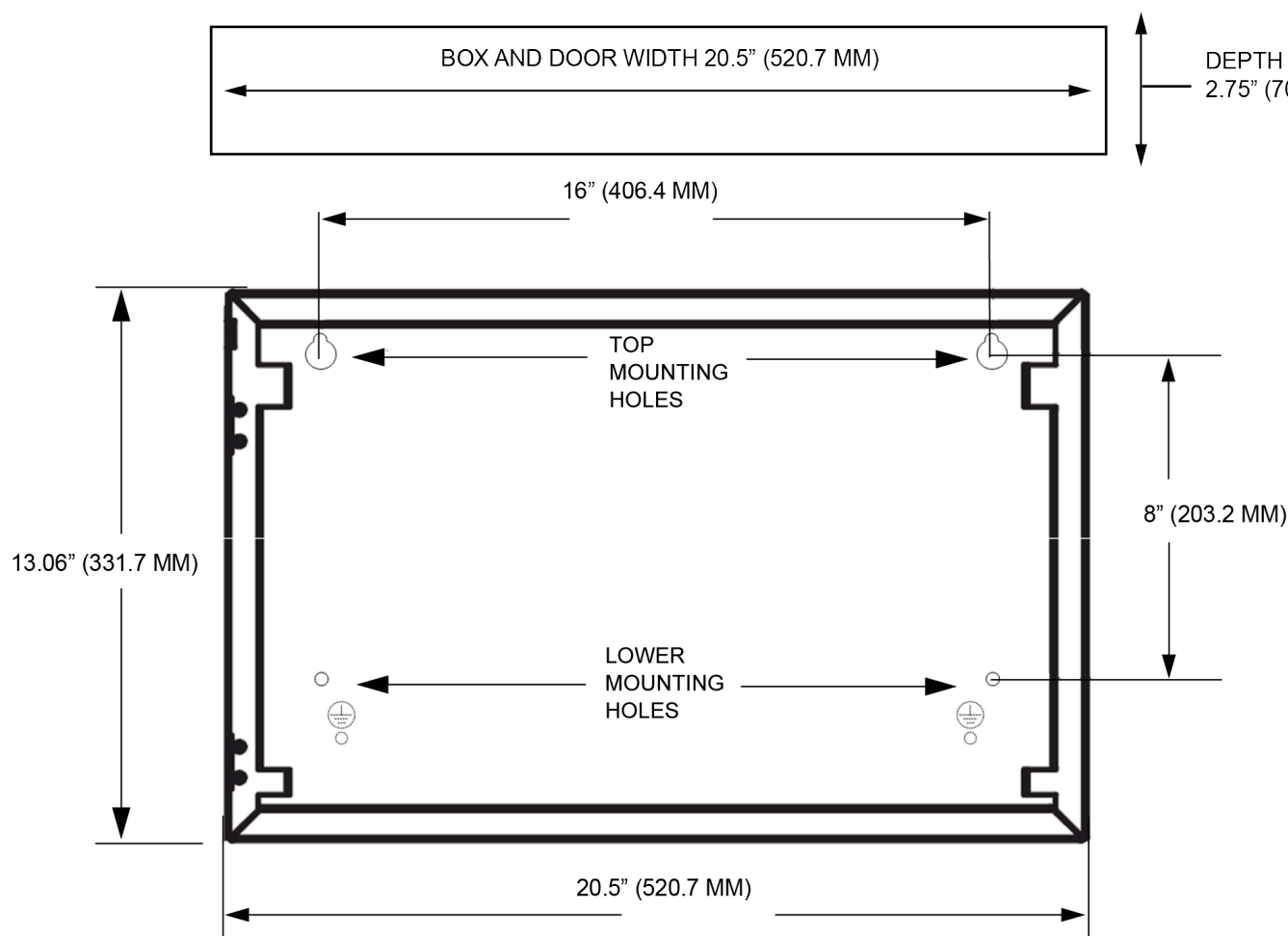


Figure 10: Remote ES Touch Screen Display mounting reference for 4100-9404 and 4100-9405

## Product selection

Table 1: Remote Annunciators with ES Touch Screen Display

Model	Compatible with	Description	Features	Listing
4100-9404	4100ES and 4010ES FACUs	Remote ES Touch Screen Display, red	Remote ES Touch Screen with cabinet, for surface mounting, includes mounting box and door assembly with glass insert.	UL/ULC, CSFM, FM
4100-9405		Remote ES Touch Screen Display, platinum	Uses RUI, RUI+ or Ethernet communications, requires external 24 VDC or 32 V (Power over Ethernet) power source. Refer to <i>Remote ES Touch Screen Display Assembly Installation Instructions (579-1323)</i> for details.	UL/ULC, CSFM, FM
4100-9616	4100ES Fire Alarm Control Unit Annunciator Cabinets. Refer to data sheet <i>Remote Annunciator Panels (S4100-1039)</i> for additional details.	Remote Annunciator with ES Touch Screen Display	Remote Annunciator includes the following items: ES Touch Screen Display, 4100ES Expansion Bay with PDI, Basic Transponder Interface Card. Power supply is specified separately when configured.	UL/ULC, CSFM, FM
4100-9617		Basic Remote Annunciator with ES Touch Screen Display	Basic Remote Annunciator includes the following items: ES Touch Screen Display, 4100ES Expansion Bay with PDI, Transponder Interface Card. Power is supplied from host control panel.	UL/ULC, CSFM, FM

## Specifications

**Table 2: General display specifications**

Specification	Rating
Resolution	800 x 600 pixels (RGB)
Size	8 in. (203 mm) diagonal
Type	Color touch screen
Touch screen technology	Resistive
Event display	Up to eight events without scrolling
Normal screen custom watermark file format	680 x 484 pixels: BMP, JPG, TIFF, GIF, or PNG file format

**Table 3: Environmental and power specifications for 4100-9404 and 4100-9405**

Specification	Details	
Voltage	24 V	32 V, power over Ethernet
Current draw	160 mA normal standby, LCD dimmed	130 mA normal standby current draw, LCD dimmed
	225 mA alarm	190 mA alarm
Operating temperature	32°F to 120°F (0°C to 49°C)	
Operating humidity	Up to 93%, non-condensing, relative humidity at 90°F (32°C)	

## Wiring requirements

**Table 4: RUI communications wiring requirements**

RUI Communications	
Recommended wire	Unshielded twisted pair (UTP), 18 AWG (0.82 mm <sup>2</sup> )
Class B T-Tap wiring distance	Up to 10,000 ft (3048 m) total wiring, up to 2500 ft (762 m) to farthest device
Class X wiring distance	Up to 2500 ft (762 m)
Resistance and capacitance specifications	0.58 µF (580 nF) maximum capacitance between conductors, 35 ohms maximum total line resistance

**Table 5: Ethernet communications wiring requirements**

Ethernet communications	
Recommended wire	Category 5 unshielded Ethernet cable, or better
Class B wiring distance, T-Taps not allowed	323.08 ft (100 m) maximum

**Table 6: 24 VDC power connections wiring requirements**

24 VDC power connections	
Recommended wire	18 to 12 AWG (0.82 mm <sup>2</sup> to 3.31 mm <sup>2</sup> ) conductors

**Table 7: Earth ground wiring requirements**

Earth ground	
A dedicated earth ground connection to the electrical box is required for proper ESD and EMI protection; wire in accordance with NFPA 70, <i>National Electrical Code</i> , Article 250.	